

# NEWSLETTER

Shoal Bay Update | February 2020

**This newsletter provides an update on a number of projects that we are working on in Shoal Bay now and into the future.**

We are currently planning a new shared path along Shoal Bay foreshore.

The funding for this new path was endorsed in August 2019 through the Port Stephens 2020 process.

Other improvements which are also funded include:

- new park furniture;
- new amenities (toilets and outdoor shower) to replace the existing facility;
- upgrade of the pedestrian crossing near Shoal Bay Holiday Park entrance

## Project details

The preferred route of the new shared pedestrian and cycle path is shown over the page. The benefits of this route include easy access from parked cars and nearby shops. This route also allows the foreshore area to be as open as possible to maximise use of the grassed area.

The new park furniture will be located adjacent to the new path alignment. This location will provide easy access to park furniture especially for people with limited mobility.

The pedestrian crossing upgrade is designed to create a safer crossing point near the Holiday Park. These works will include an extension of the 40km shared zone to incorporate the new crossing. These works are partially funded by Transport for NSW.



## How can I find out more?

### Drop In Session

Join Council staff on the foreshore to view plans and talk in detail about the projects.

When: Anytime between 10am to 12noon,  
Friday 13 March 2020

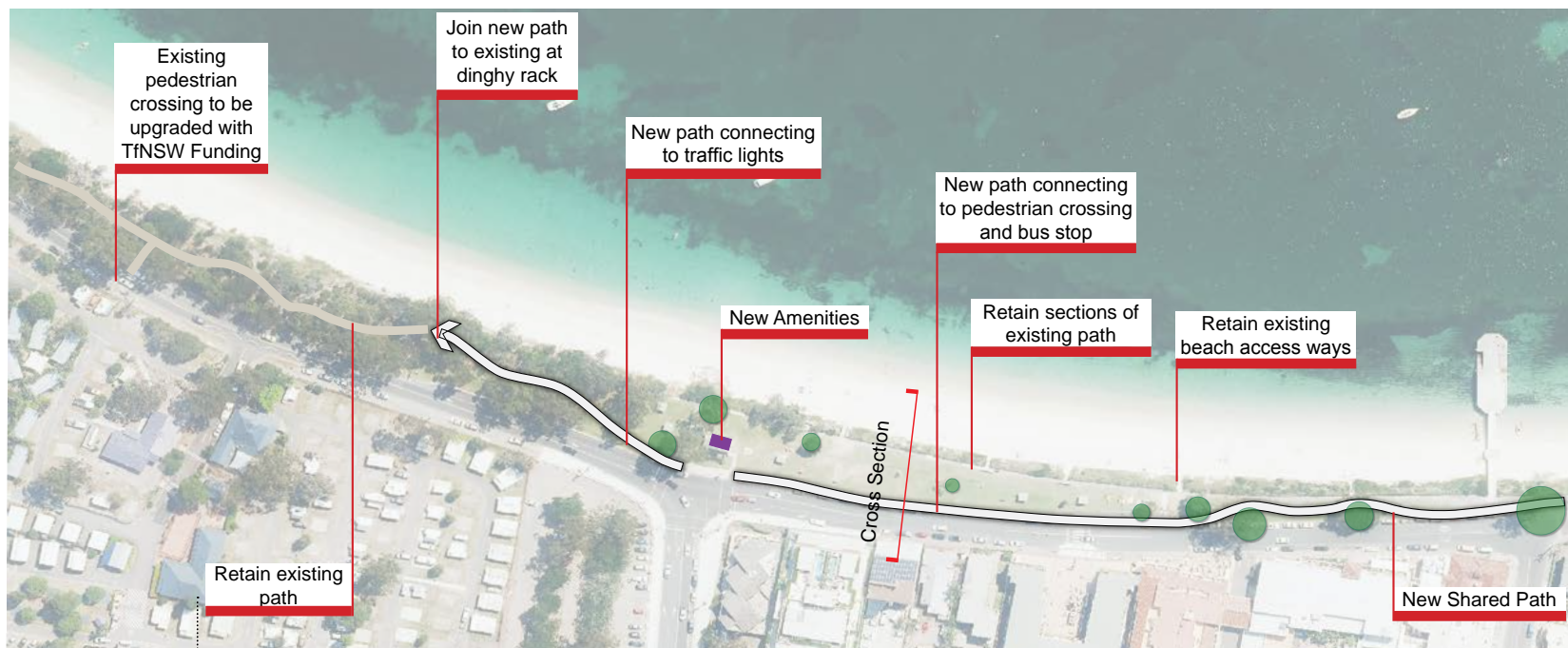
Where: Shoal Bay Foreshore (near amenities)

**Online survey go to <https://haveyoursay.portstephens.nsw.gov.au/shoal-bay-foreshore>**

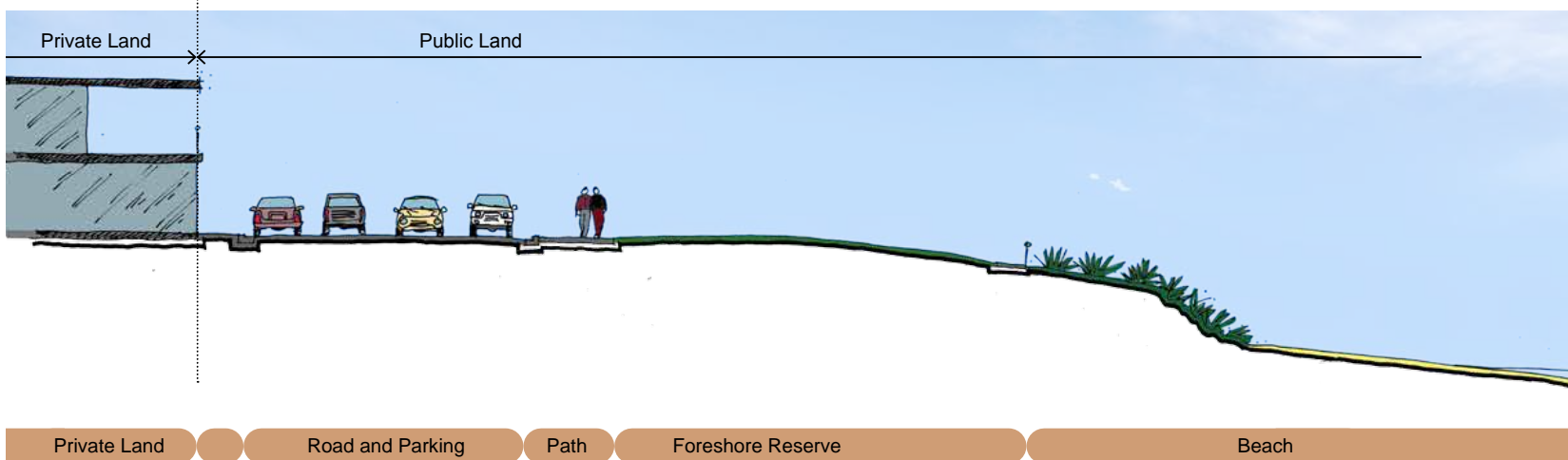
The survey is open from now until 21 March 2020 and your responses will help us gather information about what you love and what you'd like to see improved along Shoal Bay Foreshore. There will also be specific questions about how you get to and move around Shoal Bay will help inform our investigation into parking in the area.

If you have any questions please contact our Customer Service team on 02 4988 0255 and they will direct your call to the most relevant team.





**Preferred route alignment of new shared path**



**Cross section of new shared path**